

## DO NOT CONNECT LIGHTGLASS UNIT DIRECTLY TO LINE VOLTAGE

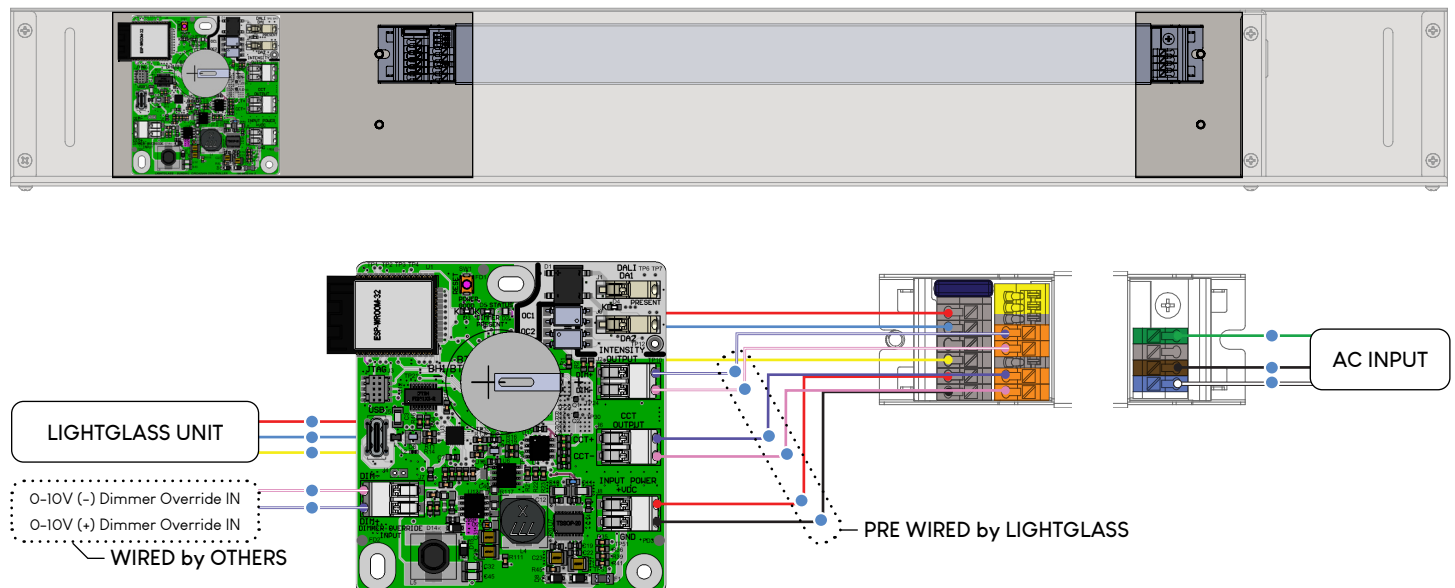
This will result in permanent damage and all warranty will be void.

### WIRE LEGEND

	White		Pink + White Stripe
	Black		Purple
	Red		Purple + White Stripe
	Blue		Green (Ground)
	Yellow		Wire Junction
	Pink		

### STANADALONE WIRING

Each standalone unit will be provided with it's own SunDial Controller in the dedicated driver box.  
SunDial is pre-programmed by LIGHTGLASS and requires no commisioning.



TYPE	US	CHANNEL
Warm White	Yellow	CH2-
Cool White	Blue	CH1-
Common	Red	CH1+ or CH2+

TYPE: 0-10V	WIRE COLOR
CCT-	Gray
CCT+	Purple
DIM-	Gray w/ White Stripe
DIM+	Purple w/ White Stripe

TYPE	US	EU
Line / Phases	Black	Brown
Neutral	White	Blue
Ground	Green	Green/Yellow

### ARRAY WIRING

Each array of fewer than 20 units will have 1 dedicated SunDial controller. The 0-10V signals from the SunDial Controller must be daisy chained and wired to each driver included for the array.

# LIGHTGLASS

## DO NOT CONNECT LIGHTGLASS UNIT DIRECTLY TO LINE VOLTAGE

This will result in permanent damage and all warranty will be void.

### WIRE LEGEND

	White		Pink + White Stripe
	Black		Purple
	Red		Purple + White Stripe
	Blue		Green (Ground)
	Yellow		Wire Junction
	Pink		

### ARRAY WIRING

Each array of fewer than 20 units will have 1 dedicated SunDial controller. The 0-10V signals from the SunDial Controller must be daisy chained and wired to each driver included for the array. Each driver powers a unique LIGHTGLASS unit.

